

F12

**F12 SEMI AUTOMATIC MAGAZINE FED
FULL METAL SHOTGUN INSTRUCTION MANUAL**



TYPHOON
DEFENCE INDUSTRIES

Read the instructions and warnings in this manual before using this firearm!!!

INTRODUCTION TO TYPHOON DEFENCE INDUSTRIES

Typhoon Defence Industries has long been associated with the top manufacturers in the firearms industry and is now exporting firearms to 39 countries. All firearms are subjected to C.I.P., SAAMI and TSE testing which ensures the highest quality firearms and an emphasis on safety. Traditional craftsmanship paired with modern technology has resulted in some of the finest firearms on the market today.

Typhoon Defence Industries has built itself around its core philosophy: THE BEST OR NOTHING. An emphasis on research and development has led to multiple patents as well as stunning and innovative design. We are driven by a continued commitment to design that leads the industry.

Quality Certificates :

ISO 9001:2008 Certificate

European Quality Assurance Certificate

Turkish Standards Institution Certificate

GENERAL INFORMATION

The F12 uses an over the barrel gas system that uses the gas pressure from a discharged shell to cycle a precision spring loaded mechanism. It then ejects the empty cartridge and loads a new cartridge into the chamber (each time the trigger is pulled). This advanced gas metering technology allows you to shoot 2 3/4" and 3" shells interchangeably. This technology reduces recoil and allows the shooter years of reliable performance. (*NOTE DO NOT USE 3 1/2" SHELLS)

Safety Switch or Button

The safety is designed to stop the trigger mechanism. Do not rely on your guns safety. Treat every gun as if it were loaded and ready to fire. The safety on any gun is a mechanical device, and it is not intended as a substitute for common sense or safe gun handling. Always keep the muzzle pointed in a safe direction.

SERIAL NUMBER OF THE FIREARM

The serial number is located on the lower receiver. Each serial number is specific to that shotgun and is used for identification and registration. It is recommended that you record your serial number in your manual and keep the information in a secured location.



Be certain this owner's manual is available for reference and is kept with this firearm if transferred to another party. If the manual is lost or misplaced, contact your "Product Service Center" for a free replacement copy, or download a copy from www.typhoondefence.com

After performing any work on your firearm such as cleaning, adjustments, disassembly, or installation of any accessory, the firearm should be re-checked for proper functioning before firing live ammunition.

Firearms are complicated mechanisms. Any modification, alteration, or improper fitting of parts may result in a dangerous malfunction, damage to the firearm and injury to the shooter and others. The firearm's owner must accept full responsibility for the correct reassembly and functioning of the firearm after any disassembly or replacement of parts.

If you do not understand any of the material in this manual or have any questions, contact your dealer or a qualified gunsmith.

Do not attempt to load or use any firearm until you have read and understood the information contained in its owner's manual. Before handling your firearm, you should learn how it operates and how to maintain it. This includes knowing its basic parts, how the manual safety and other safety features operate, how to safely open and close the action, and how to safely load and unload ammunition from the firearm. Improper use and handling is dangerous and could cause serious injury or death to you or those around you. All users of the firearm must become thoroughly familiar with the instructions in this manual.

As the owner of a firearm, you must undertake the full-time responsibility of safe firearms handling for your own safety and the safety of those around you:

- Keep all firearms and ammunition out of the reach of children.
- Store your firearms and ammunition separately.
- Never store a loaded firearm.
- Never leave a loaded firearm unattended.
- Never transport a loaded firearm in a vehicle.
- Unload your firearm when you have stopped shooting and when you have to climb a tree, fence, cross a slippery surface or have to transport it in a vehicle.
- Do not load your firearm before you are in a place where it is safe to shoot, and keep your finger off the trigger until you are on target and have decided to fire.
- Never shoot at water, rocks or any hard surfaces. Shots may glance off such surfaces and cause injuries.
- Do not use alcohol or drugs before or while handling firearms.
- Do not touch the trigger while the safety button is being engaged or disengaged.



Always point the muzzle of your firearm in a safe direction, regardless of whether the firearm is loaded or unloaded. Always treat every firearm as if it were loaded. Give your firearm to someone with the action open (bolt fully rearward) and safety in the "ON" (SAFE) position, after you verify the firearm is unloaded. Insist on the same procedure when receiving a firearm from someone else. Learn the location of all the safety features of your firearm and how they operate. Wear eye and ear protection when shooting. Shooting without proper ear protection can cause hearing damage. The use of eye protection during any type of shooting is important to protect your eyesight. Due to the heavy recoil of a shotgun, maintain an adequate distance between the rear of the scope (if equipped) and your face at all times. Be certain the scope installation does not interfere with access to, or the proper functioning of the safety.



WE SPECIFICALLY DISCLAIM ANY RESPONSIBILITY FOR DAMAGE OR INJURY WHATSOEVER OCCURRING IN CONNECTION WITH, OR AS A RESULT OF, THE USE OF FAULTY, OR "REMANUFACTURED," OR HAND-LOADED (RELOADED) AMMUNITION. ADDITIONALLY, WE DISCLAIM ANY RESPONSIBILITY FOR DAMAGE OR INJURY WHICH RESULTS FROM ANY MODIFICATIONS OR CHANGES THAT ARE NOT A PART OF THE FIREARM AS DELIVERED FROM THE FACTORY.

CONGRATULATIONS!!!

Learn to clean your firearm thoroughly and make certain no oil, grease, or other materials are blocking the barrel. Obstructions of any kind can cause damage to the firearm, and may result in serious personal injury to the shooter and/or others nearby. Practice proper firearm maintenance and safety. Make sure all exposed metal surfaces are coated with a thin film of oil, especially after exposure to damp weather. (See proper section of this manual for cleaning instructions). Do not plug barrel or store in a fabric-lined case which will absorb lubricants from the firearm. Before using after storage, follow complete instructions stated in this manual for familiarization with the firearm. A thorough inspection should be performed before going into the field. Have your firearm periodically checked by a qualified gunsmith.

You are now the owner of the Typhoon Defence F12 12-gauge shotgun. Your shotgun has an innovative design and is manufactured from high quality materials. With regularly performed maintenance and the use of proper ammunition it will provide you with many years of service. In order to achieve the best performance and reliability from your shotgun, please read and fully understand all of the instructions, safety guidelines, and warnings carefully in this manual. Your quality shotgun is enormously reliable and safe unless it is handled in a careless or irresponsible manner.

REMEMBER: It is imperative that the firearm handler be fully educated and conscious of the importance of executing proper gun safety rules when operating any firearm.

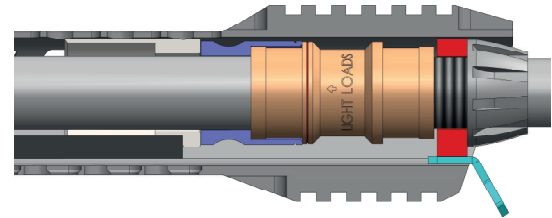
Before using or firing with any live ammunition you should know and fully understand your shotgun's parts, function, and operating mechanisms. So carefully read and fully understand all of the information about the parts and procedures of using the shotgun safely and effectively.



USAGE OF TYPHOON F12 PATENTED DUAL GAS SYSTEM

LIGHT LOADS

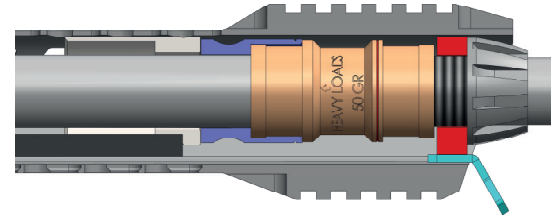
To set the gas block on light loads
(1200 FPS OR LOWER) point the LIGHT LOADS arrow
towards the receiver.



STOCK ← → MUZZLE

HEAVY LOADS

To set the gas block on heavy loads
(1200 FPS OR HIGHER) point the HEAVY LOADS arrow
towards the receiver.

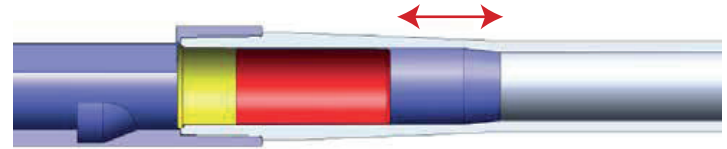


STOCK ← → MUZZLE



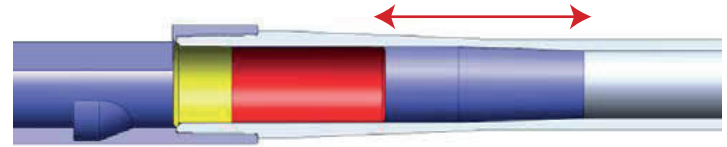
TRADITIONAL FORCING CONE

Traditional shotguns use a short forcing cone. Short forcing cones cause cycling issues, jams and other issues. Short forcing cones lead to excess gas pressure in the barrel and can lead to damage.



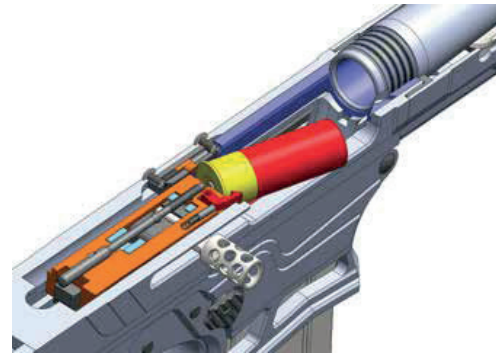
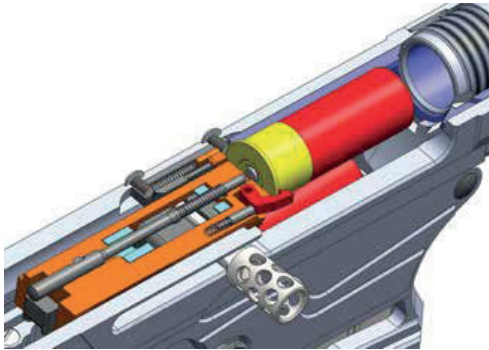
F12 FORCING CONE

The F12 forcing cone is an elongated design and provides 6% less recoil. It also reduces muzzle rise by evenly dispersing the gas inside the barrel.



F12 SPRING EJECTOR SYSTEM

This system provides shooters to use Typhoon Defence F12 semi automatic shotgun with variety inch and grammage shells in more healthy way. This system prevents jamming and problems on operation during shooting.



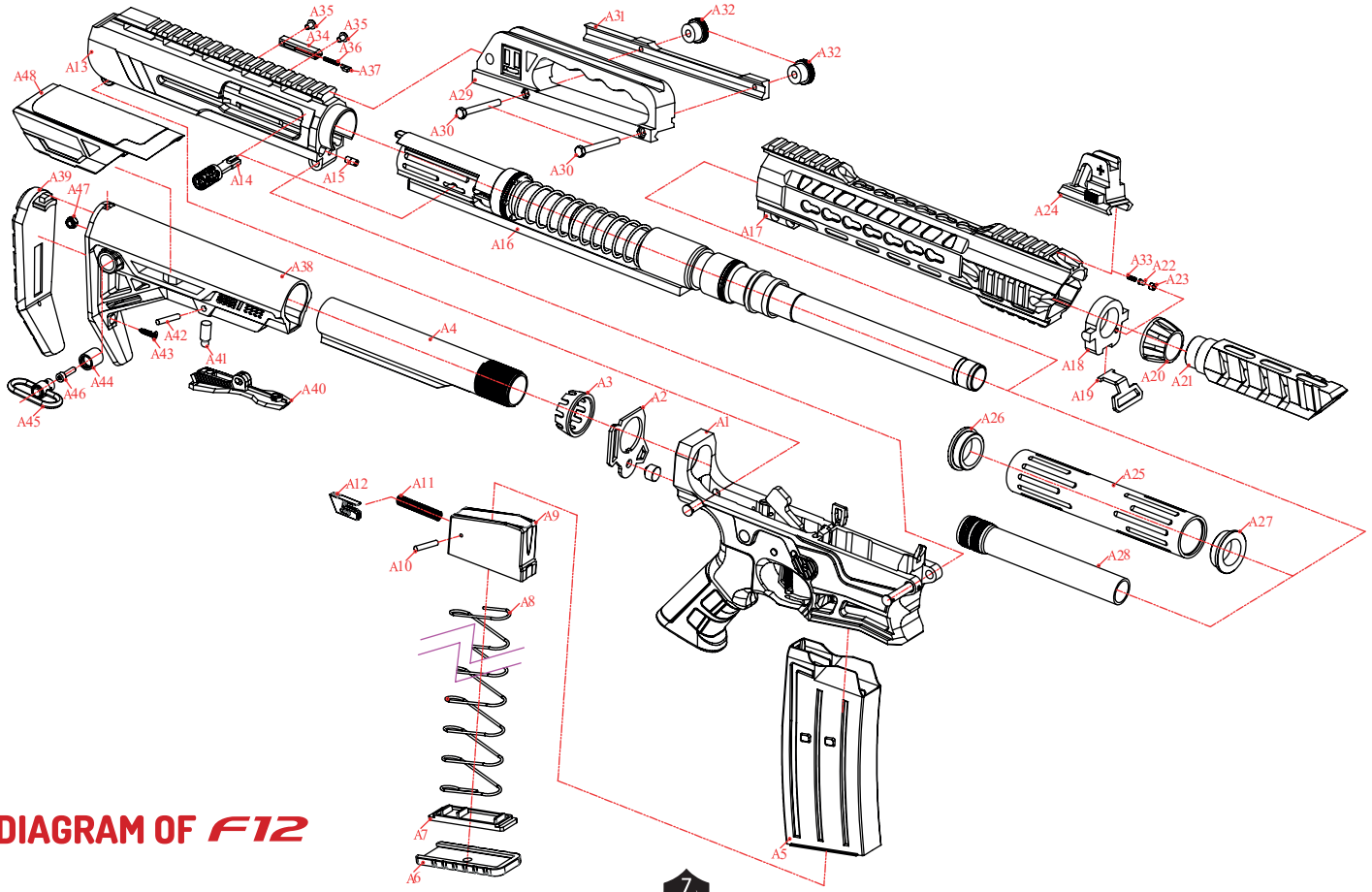


DIAGRAM OF F12



A1 F12 LOWER FRAME

A2 STOCK END PLATE

A3 CASTLE NUT

A4 6 POSITION BUFFER TUBE

A5 MAGAZINE

A6 MAGAZINE BUTTOM PLUG

A7 SPRING RETAINER APARATUS

A8 MAGAZINE SPRING

A9 MAGAZINE UPPER PLUG

A10 MAGAZINE UPPER PLUG PIN

A11 MAGAZINE SIDE EXTRACTOR SPRING

A12 MAGAZINE SIDE EXTRACTOR

A13 F12 UPPER FRAME

A14 CHARGING HANDLE

A15 HANDGUARD RETAINER PIN

A16 BARREL GROUP ASSEMBLY

A17 ALUMINIUM HANDGUARD

A18 HANDGUARD RETAINER

A19 FRONT SWIVEL

A20 HANDGUARD RETAINER NUT

A21 F12 FLASHHIDER

A22 HANDGUARD RETAINER PIN

A23 HANDGUARD RETAINER SCREW

A24 F12 FRONT SIGHT

A25 F12 SILENCER

A26 F12 SILENCER BACK SIDE NUT

A27 F12 SILENCER FRONT SIDE NUT

A28 EXTENDED CHOKE

A29 ADJUSTABLE REAR SIGHT

A30 A.R.S SCREW-1

A31 A.R.S RETAINER CAP

A32 A.R.S NUT

A33 HANDGUARD RETAINER SPRING

A34 F12 SPRING EJECTOR

A35 F12 SPRING EJECTOR RETAINER SCREW

A36 F12 EJECTOR SPRING

A37 F12 SPRING EJECTOR RETAINER PIN

A38 6 POSITION ADJUSTABLE STOCK

A39 F12 RECOIL PAD

A40 STOCK ADJUSTING KIT

A41 STOCK RETAINER PIN

A42 STOCK ADJUSTING KIT PIN

A43 F12 RECOIL PAD SCREW

A44 F12 SWIVEL HOLE

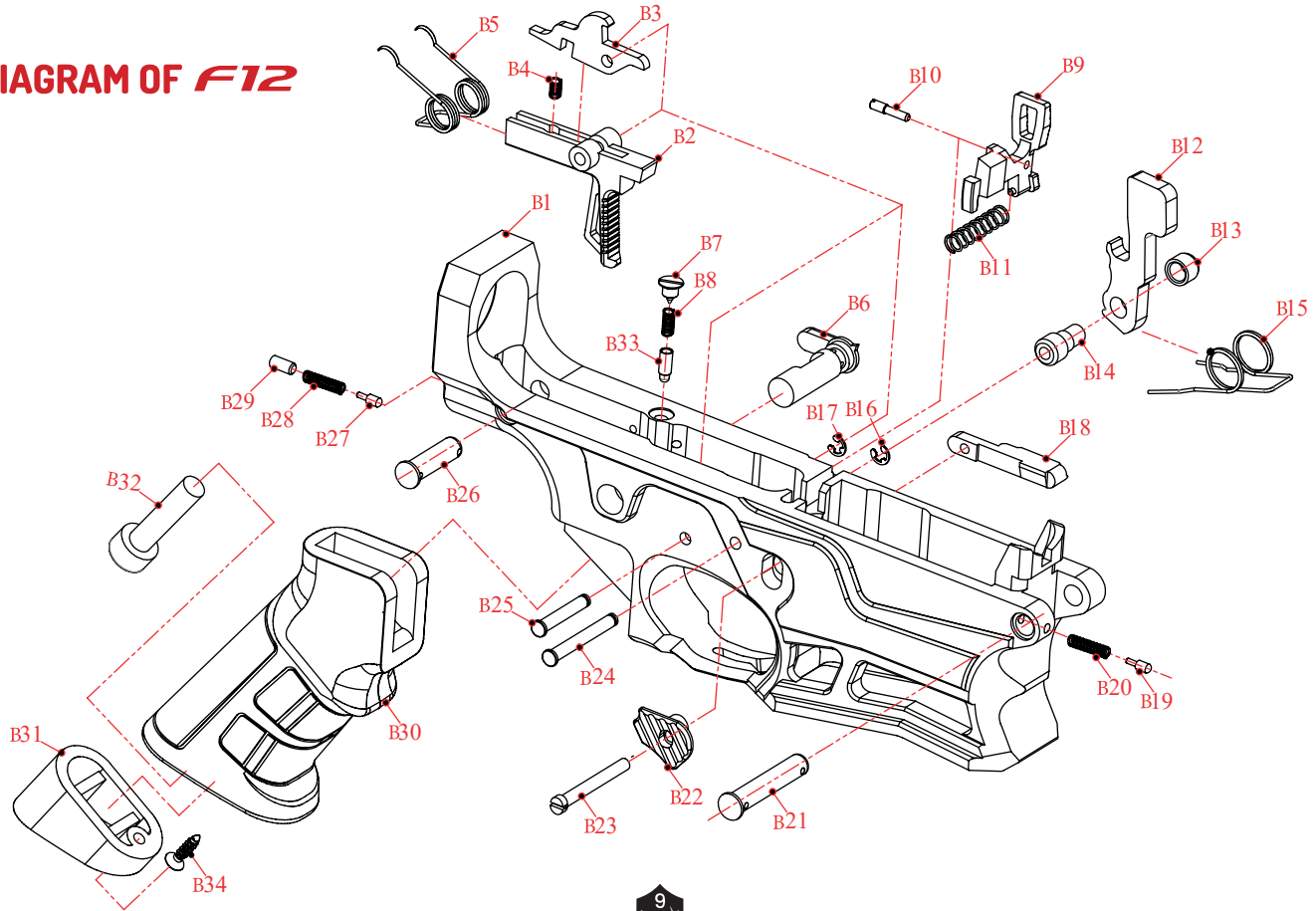
A45 F12 SWIVEL

A46 F12 SWIVEL SCREW

A47 F12 SWIVEL NUT

A48 F12 CHEEK ADJUSTMENT

DIAGRAM OF F12



B1 F12 LOWER FRAME

B2 TRIGGER

B3 DISCONNECTOR

B4 DISCONNECTOR SPRING

B5 TRIGGER SPRING

B6 SELECTOR SAFETY

B7 SAFETY SCREW

B8 SAFETY SPRING

B9 BOLT CATCH

B10 BOLT CATCH PIN

B11 BOLT CATCH SPRING

B12 HAMMER

B13 HAMMER FIXING KIT-1

B14 HAMMER FIXING KIT-2

B15 HAMMER SPRING

B16 HAMMER PIN SEGMAN

B17 TRIGGER PIN SEGMAN

B18 MAGAZINE CATCH

B19 PIVOT PIN DETENT

B20 PIVOT DETENT SPRING

B21 PIVOT PIN

B22 F12 MAGAZINE CATCH BUTTON

B23 MAGAZINE CATCH SCREW

B24 HAMMER PIN

B25 TRIGGER PIN

B26 TAKEDOWN PIN

B27 TAKEDOWN PIN DETENT

B28 TAKEDOWN DETENT SPRING

B29 TAKEDOWN RETAINER NUT

B30 F12 PISTOL GRIP

B31 PISTOL GRIP BOTTOM CAP

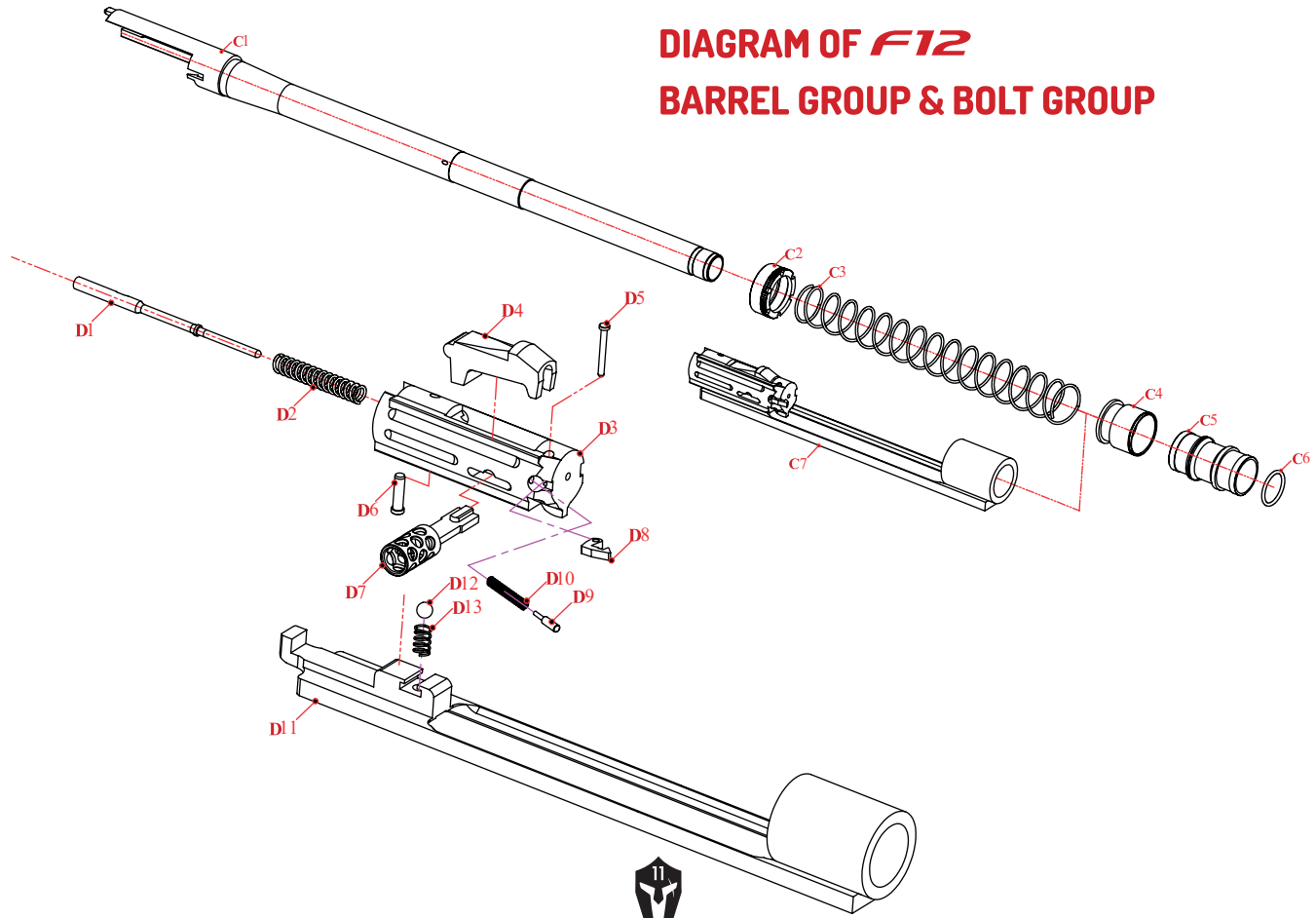
B32 PISTOL GRIP SCREW

B33 SELECTOR DETENT

B34 PISTOL GRIP CAP SCREW



**DIAGRAM OF F12
BARREL GROUP & BOLT GROUP**



BARREL GROUP ASSEMBLY

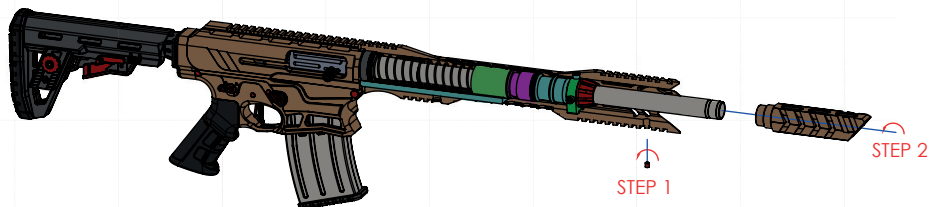
- C 1 BARREL LUG
- C 2 BARREL NUT
- C 3 OPERATION SPRING
- C 4 F12 PISTON
- C 5 DUAL GAS KIT
- C 6 GAS O-RING
- C 7 BOLT CARRIER

BOLT GROUP ASSEMBLY

- D 1 FRING PIN
- D 2 FRING PIN SPRING
- D 3 BOLT
- D 4 BOLT LOCK
- D 5 EXTRACTOR PIN
- D 6 FIRING PIN RETAINER
- D 7 BOLT HANDLE
- D 8 EXTRACTOR
- D 9 EXTRACTOR SPRING PIN
- D 10 EXTRACTOR SPRING
- D 11 ACTION BAR (CARRIER)
- D 12 CARRIER BALL
- D 13 CARRIER BALL SPRING

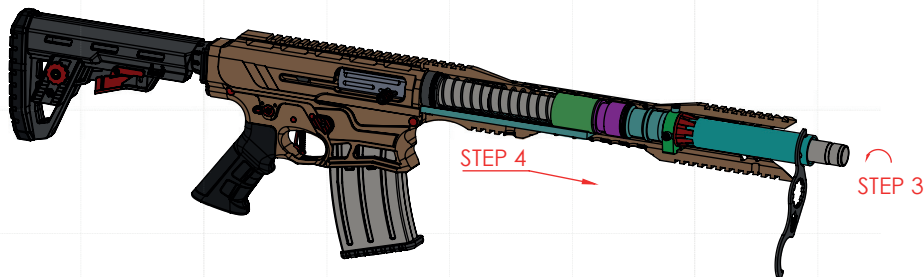


**DISASSEMBLING OF TYPHOON F12
MAXI FOREND WITH MUZZLE BREAK**



STEP 1: TURN THE METRIC 5 SCREW WITH 2.5 mm ALLEN WRENCH TO DIRECTION OF COUNTERCLOCKWISE.

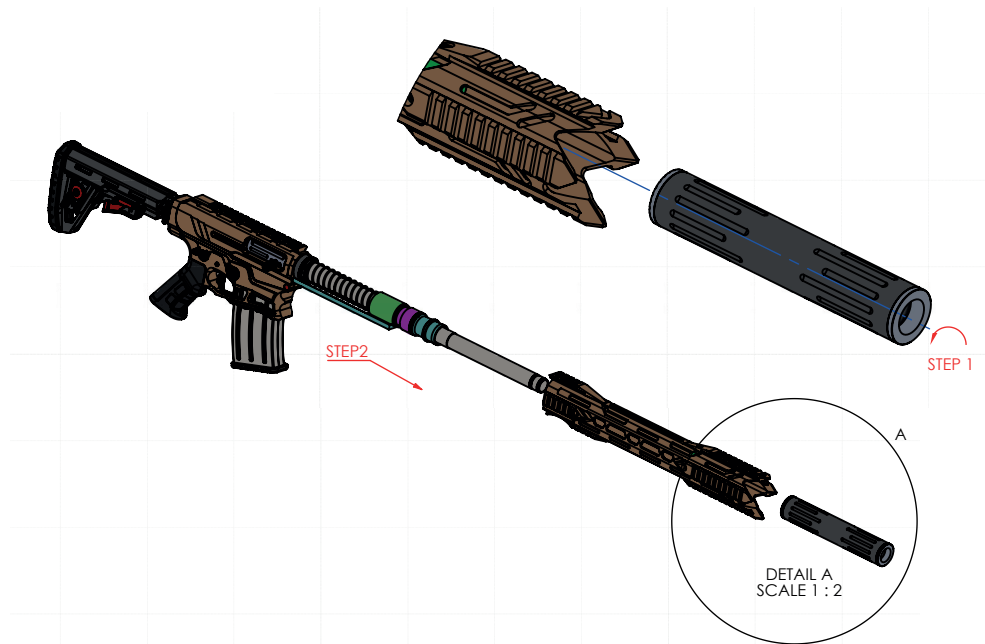
STEP 2: DISASSEMBLE THE MUZZLE BREAK OF F12 BY TURNING TO COUNTERCLOCKWISE DIRECTION. YOU WILL BE ABLE TO GET MUZZLE BREAK FOR ADDING SUPPRESSOR ON YOUR F12 BY FOLLOWING THESE 2 STEPS.



STEP 3: YOUR BOX CONTENT INCLUDES 1*SPECIAL MAXI FOREND WRENCH & 1*F12 MULTIFUNCTIONAL WRENCH FOR DISASSEMBLING OF MAXI FORENDS IN HEALTHY WAY.YOU CAN USE THESE WRENCHS AS ON THE PHOTO FOR LOOSING CASTLE NUT OF YOUR GUN.

STEP 4: YOU CAN PULL YOUR FOREND EASILY AFTER FOLLOWING STEP 1 , STEP 2 , STEP 3 IN RIGHT WAY.
YOUR GUN WILL BE READY TO MAINTENANCE!!!

**DIASSEMBLING OF TYPHOON
F12MAXI FOREND WITH FAKE SUPRESSOR**



STEP 1: =TURN FAKE SUPPRESSOR OF F12 TO COUNTERCLOCKWISE DIRECTION FOR DIASSEMBLING IT.

STEP 2: YOU CAN TAKE THE MAXI FOREND OF YOUR F12 EASILYFOR MAINTENANCE OR ASSEMBLING OTHER ACCESORIES



Photo 1-]
Point the gun in safe direction and be sure about that the gun is empty.



Photo 4-]
Turn F12 muzzle break by using your hand to direction of clockwise until thread on barrel allows to disassemble muzzle completely.



Photo 2-]
Pull F12 charging handle to operation direction then use shell safety kit (yellow part) to make ready your gun disassembling in right way. If you do not use that shell safety kit, you will damage shell carrier ramp absolutely!!!



Photo 5-]
Your F12 shotgun is ready to disassemble in right way with that shell safety kit.



Photo 3-]
Turn allen wrench to the direction of clockwise for starting to disassemble F12 muzzle break as in the photo



Photo 6-]
Push takedown pin at the back side of lower frame receiver by a tool or your finger as in the photo.



Photo 7-)
Push pivot pin at the front sight of lower frame by a tool or your finger as in the photo.



Photo 10-)
Pull or push sling swivel apparatus to the thread of barrel for passing next step.



Photo 8-)
You will be able to separate upper and lower frame of your gun after these steps as in the photo easily in right way.



Photo 11-)
Use the 4.00 mm allen wrench in your F12 tool set for turning the screws on bottom side of forend for starting to disassemble forend of your shotgun.



Photo 9-)
Use your F12 Special Wrench Set for starting to disassemble forend of your shotgun.



Photo 12-)
You can pull easily forend of F12 as in the photo ,if you operated the process in Photo 11.



Photo 13-)

Pull the action bar until the charging handle and the hole (charging handle lock hole) is parallel for unlocking the charging handle of F12. Then pull the charging handle to right side of the gun for disassembling charging handle.



Photo 14-)

Use your F12 Special Wrench Set for turning the barrel nut of your gun.



Photo 15-)

You can disassemble bolt group of F12 completely after required steps as in the photo easily.



Photo 16-)

If you need to adjust or change your stock you can use F12 Special Wrench Set as in the photo.



Photo 17-)

After turning the F12 castle nut until pin leaves stock end plate, you will be able to operate your stock according to your requirements.

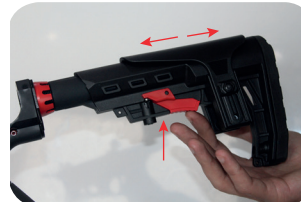


Photo 18-)

You can adjust trigger range of gun according to your physical features by using the 6 step adjustment kit on your F12 gun as in the photo. On the other hand you are able to adjust checkering of your gun by using the screws of mobile checkering kit.



MOBILE CHOKE USAGE FOR TYPHOON F12

Choke Replacement Instructions For Typhoon F12 :

WARNING: Make sure that your shotgun is not loaded and in safety while reassembling or disassembling chokes.

WARNING: During the choke changing procedure, make sure that the choke and the bearing of the choke of the shotgun is completely clean. Otherwise, your barrel can deform during firing.

- When chokes need to be changed, remove the choke on it by using the choke changing wrench provided along with the product.
- If the thread of the choke is dirty clean it with chemical substance (solvent) and synthetic brushes.
- Use the choke wrench for the new choke to be fitted, tighten clockwise and ensure that all of the thread is fully seated.

WARNING: When reassembling do not tighten unless you make sure that the thread of the choke absolutely mated with the thread of the barrel.

WARNING: In order to make sure that the chokes have been fully tightened you should see no protrusion out of the tip of the barrel. Figure 15 choke of number 3

- Do not shoot without a choke in order to avoid damaging the barrel and thread of choke.
- Never look into the muzzle to see the choke number when your shotgun is full.
- Before shooting, make sure that the choke has been tightened well. Check it back after a few shots.
- Do not use a different tool or a spanner for removal and installation of choke, except your choke wrench produced and provided by

TYPHOON DEFENCE INDUSTRIES.

- Never fire a single bullet or slugs with the chokes No 1, 2, 3,4
- You can look at the notches on the screw side in order to see the choke number. (Figure 15)
- Remove and clean the choke after shooting during maintenance. After having lubricated, the threads continue with the assembly.
- Do not fire steel pellets with the chokes No 1, 2, 3,4

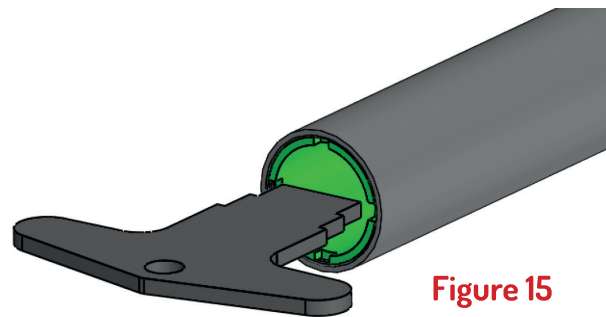
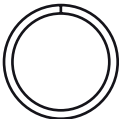
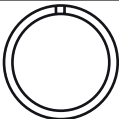
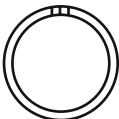
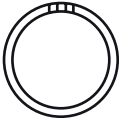
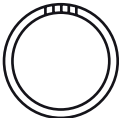


Figure 15

CHOKE TYPES AND BENEFICIAL USAGE

CHOKE TYPE	SYMBOL	GAME	PELLET SIZE	USEFUL SHOOTING DISTANCE
* 1 FULL		Goose, Duck, Wood Grouse. For long range hunting with lead shot and tight groups	1-2-3 Single Bullet X Slug X Steel Shot X	50-60 Metres
** 2 IMPROVED MODIFIED		Duck, Pheasant, Wood Grouse, Rabbit	4-5-6 Single Bullet X Slug X Steel Shot X	41-44 Metres
*** 3 MODIFIED		Partridge, Pheasant, Quail, Pigeons, Woodcock For long range hunting with lead shot and tight groups.	5-6-7-8 Single Bullet X Slug X Steel Shot X	31-41 Metres
**** 4 IMPROVED CYLINDER		Quail, Dove and target shooting For shooter distance more open shooting	7-8-9-10-11-12 Single Bullet X Slug X Steel Shot X	30-35 Metres
***** 5 CYLINDER		For sporting clay and skeet shooting. Short distances more open shooting.	7-8-9-10-11-12 Single Bullet ✓ Slug ✓ Steel Shot ✓	20-30 Metres

PARTS

To order parts, please furnish the following information: Your name, address, telephone number, firearm serial number, maker and model. When we receive your request we will send you an order form and a parts breakdown with prices.

MAINTENANCE AND CLEANING

LUBRICATION WARNING: Firing a shotgun with oil, grease, or other debris partially obstructing the bore may result in damage to the firearm or injury to the shooter and those nearby. Before firing make sure the bore and chamber of the barrel is unobstructed and dry. Never spray or apply lubricant on shotshells. Firing another shotshell behind an obstruction may damage the shotgun and cause death or injury. Only use lubricants properly and sparingly. You are responsible for the proper care and maintenance of your shotgun.

1. Disassemble your shotgun.
2. Using a proper cleaning rod, run a solvent-wetted patch through the bore several times. This will then be followed by running dry patches through the bore to remove any debris or residue.
3. If the bore is leaded to the extent that the above patch cleaning procedure did not remove the lead, then scrub the bore full length with a solvent-wetted brass bristle brush. When the leading is loose then repeat step #2.
4. The surfaces of bolt carrier, ejector, and inside surfaces of the receiver should be coated very lightly with non-penetrating lubricating oil.
5. Reassemble the shotgun and wipe the exterior metal surfaces sparingly with an oiled cloth. Swab the bore with an oily patch before storing the firearm.
6. Place the shotgun in a safe, locked storage space where unauthorized persons cannot access the firearm. Never store the shotgun in a leather case as leather attracts moisture even though it may appear dry.
7. Never fire your gun without choke tubes snugly tightened in barrels. Do not over tighten choke tubes. Wipe all exposed metal surfaces with an oiled cloth before storing. Do not squirt or pour oil into the inside mechanism because it may cause deformation.

SHIPPING

When returning your gun for service, please take care in packaging. Disassemble your gun, wrap in paper or other protective media and place gun in the original box. (THIS BOX WILL PROTECT THE GUN BUT IS NOT DESIGNED FOR SHIPPING). Wrap box in a cardboard box approved for interstate shipping. Typhoon Defence Industries LLC. is not responsible for damage incurred during shipping.

THANK YOU

Thank you for purchasing a Typhoon Defence Industries shotgun. We are sure this gun will bring you years of hunting and/or shooting pleasure. Your satisfaction is the key to our success. Please let us know if we can be of service and please relay any observations about your guns performance or appearance. For you questions and comments please visit: www.typhoondefence.com





NAME OF PURCHASER:.....

ADRESS OF PRUCHASER:

CITY: STATE: ZIPCODE:.....

MOBILE PHONE:

PURCHASE DATE:

PRODUCT MODEL/NUMBER:

GAUGE:

SERIAL NUMBER:

PURCHASE:

PURCHASE PRICE:

STORE NAME:

SIGNATURE:.....

TYPHOON
DEFENCE INDUSTRIES

SIGN AND STAMP OF DEALER

The product has been manufactured by an ISO 9001:2008
and EQA certificated organization.

Printed on ecological paper using solar energy.



SERVICE AGREEMENT AND LIMITED WARRANTY

Typhoon Defence Industries agrees to service its products free of charge for defects in materials and workmanship in accordance with the service agreement listed below. The obligation of Typhoon Defence Industries under this agreement is limited to the repair or replacement of unserviceable parts and does not cover any incidental or consequential damages. Other than the express warranty contained herein Typhoon Defence Industries makes no warranties, express or implied.

Typhoon Defence Industries will repair or replace any unserviceable part(s) for a period of two (2) years from date of purchase and further will supply parts (Wood not included) in accordance with the above warranty statement provided your firearm had not been altered, abused, willfully damaged, or damaged by overpressure ammunition. This agreement is not transferable; its benefits apply only to the original purchaser.

To obtain factory authorized warranty service contact the place of purchase to obtain an RMA (warranty return authorization number), to arrange to have the firearm sent to an authorized service centre.

This agreement and the warranties contained herein are void if your registration card is not received with a copy of your sales slip within 30 days from date of purchase

www.typhoondefence.com



When shooting or hunting always acquire the permission of the landowner. Respect the land. Do not litter, use gates when possible, leave open and closed gates closed. Drive vehicles only where advance permission has been granted any always express gratitude for use of another persons land. Offer your labor or game as repayment for the privilege of use. Remember you are helping develop a reputation for allsportsmen/sportswomen.



TYPHOON
DEFENCE INDUSTRIES

